

COLIN GOLDBERG: TECHSPRESSIONISM

TOAST PATCHOGUE - EXHIBITION PRICELIST



623 Variation #1, 2014.
Acrylic, pigment and latex glaze on linen
48 x 32 inches
\$3500



623 Variation #2, 2014.
Acrylic, pigment and latex glaze on linen
48 x 32 inches
\$3500



623 Variation #3, 2014.
Acrylic, pigment and latex glaze on linen
48 x 32 inches
\$3500

(3 works above available as a triptych for \$8500)



Ikimono, 2014.
Oil on linen
32 x 54 inches
\$4500



Tsuru, 2014.
Oil on linen
48 x 32 inches
\$4500



Nami, 2012.
Oil on linen
36 x 40 inches
\$4000



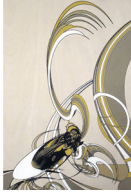
Kuren, 2013.
Gouache and pigment transfer with liquid polymer on birch panel
18 x 12 inches
\$1200



Kesshō, 2013.
Gouache and pigment transfer with liquid polymer on birch panel
18 x 12 inches
\$1200



Itadaki, 2013.
Gouache and pigment transfer with liquid polymer on birch panel
18 x 12 inches
\$1200



Hachi, 2013.
Gouache and pigment transfer with liquid polymer on birch panel
18 x 12 inches
\$1200



Shokushu, 2013.
Gouache and pigment transfer with liquid polymer on birch panel
18 x 12 inches
\$1200



Hana, 2013.
Gouache and pigment transfer with liquid polymer on birch panel
18 x 12 inches
\$1200

(6 works above available as a set for \$4500)



New Plastic Shodo #2, 2011.
Sumi ink, gouache and pigment on Kinwashi paper
19 x 13 inches
\$750



New Plastic Shodo #6, 2013.
Sumi ink, acrylic and pigment on Kinwashi paper
18 x 12 inches (48 x 33 cm)
\$800



New Plastic Shodo #5, 2013.
Sumi ink, gouache and pigment on Kinwashi paper
19 x 13 inches (48 x 33 cm)
\$800



New Plastic Shodo #8, 2013.
Sumi ink, acrylic and pigment on Kinwashi paper
19 x 13 inches
\$750

(4 works above available as a set for \$3000)